

TRT Rail-less Base system TRT 01

The TRT Rail-less Base System is an innovative solar racking solution designed specifically for asphalt shingle roofs. This system integrates the base and mini-rail into a single design.

The base is securely attached to the roof using butyl adhesive, ensuring both durability and waterproofing. Notably, the mini-rail features a height-adjustable design, making it easy to accommodate minor undulations on asphalt roofs.

Solar panels are fastened with universal clamps, and the streamlined clamp design significantly reduces installation time, making the system both efficient and user-friendly.

- **UL 2703 LISTED**

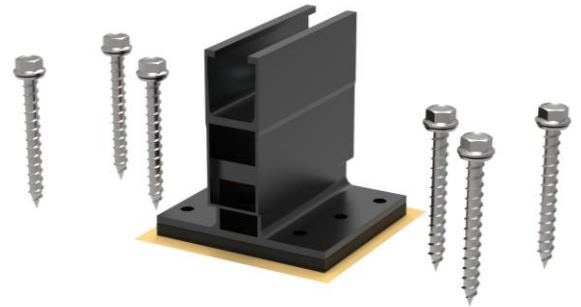
The entire system is fully compliant with UL2703 standards.

- **Fits 30~40mm module frames**

The entire system is compatible with solar panel frames ranging from 30 to 40mm.

- **PE certified**

Reviewed and approved by a Professional Engineer (PE) to ensure compliance with safety standards and adequate load capacity.



FEATURES

- **Class A/B fire rating**

Certified to maintain the fire resistance rating of the existing roof.

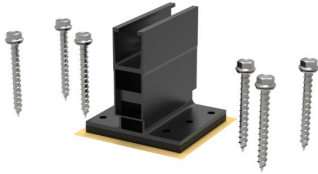
- **25 years warranty**

Ensures a worry-free experience throughout the product's service life.



PARTS OF SOLAR MOUNTING SYSTEM

Rail-less Base
3010354



Made from Aluminum 6005-T5 with a black anodized finish, featuring adjustable installation height and double butyl adhesive for secure attachment.

Mid Clamp
3010355



Black surface treatment, compatible with modules 30 ~ 40mm thick, and equipped with a grounding device.

Hidden End Clamp
3010138



Secures modules to rail ends with a fully hidden bond, with no restrictions on module size or thickness.

Grounding Lug 2
3010402



Not limited by rail type, can be directly mounted on the module frame.

Bonding Jumper
3010406



To connect N-S modules or E-W modules.

Base Cap
1040091



Provides a complete finish to the installation, eliminating safety hazards at the base end.



PARTS OF SOLAR MOUNTING SYSTEM

**Skirt -7.54ft/2300mm
A197-2300**



Customizable length options, easy assembly, compatible with any thickness of solar module, and aesthetically pleasing.

**Skirt Connector
3010405**



Splice connection for the skirt, made from high-quality aluminum.

**Skirt Cap -L
1040108**



Provides a complete finish to the installation, preventing safety hazards at the end of the skirt.

**Skirt Clip
3010363**



Fits modules ranging from 30 to 40mm in thickness.

**Micro Inverter Racking 2
3010367**



Rail-less based system micro inverter racking.

**Skirt Cap -R
1040109**



Provides a complete finish to the installation, preventing safety hazards at the end of the skirt.

